

## FAST CONNECTOR

### Overview:

The fast connector is an indispensable component in the construction of fiber optic networks, especially with the FTTH network that is gradually dominating the market today. The fast optical connector helps to save the maximum cost for the construction of fiber optic cable, both in terms of time and money, and does not require a highly qualified person to do it. Fast connector SC optical connector is used to connect directly to the fiber without the need to use a welding machine.

Fast connector is researched and manufactured on the most modern technology line, fast optical connector actively and effectively supports engineers in the construction process of FTTx fiber optic cable connection, at a low cost. The cost is very cheap, the implementation time is extremely fast as well as the connection life is quite high and the quality is quite high, so the -fast connector optical connector is widely used in the construction of optical cables today.

The most common types of optical fast connectors are SC connectors – including SC/UPC and SC/APC, in addition to FC or LC standard quick connectors, but less common

### Pictures:



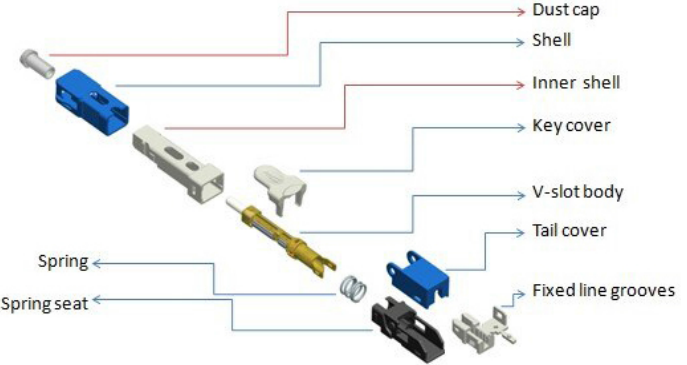
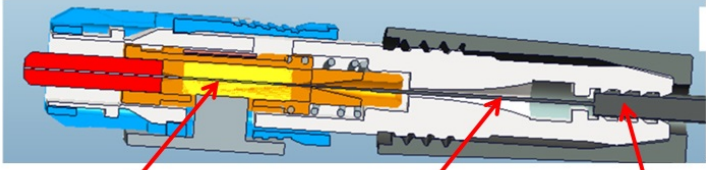

## Features:

- Compact size, easy to use, suitable for 2.0x3.0mm optical cable
- Use in ATB/Splitter box allowing bend radius 30mm
- High quality engineering plastic shell, smooth. The above has the manufacturer's information printed and does not fade over time
- Ferrule core made of Ceramics Zirconia
- The manufacturer's name is printed on the body of the product
- There is a clamp to hold the yarn firmly
- Easy to assemble with the included tools
- On each product with a release tool, press the fast connector again
- The product is 3D tested according to Telcoria GR-326-core and IEC 61754 standards
  - ✚ Singlemode type 2.5mm APC standard
    - Radius of curvature: 5-12 (mm)
    - Apex offset: <50um
    - Fiber height: -100 ÷ +100 (nm)
    - APC\_Angle: 7,5 ÷ 8,5 (deg)
  - ✚ Singlemode type 2.5mm UPC standard
    - Radius of curvature: 5-25 (mm)
    - Radius of curvature <50um
    - Fiber height: -100 ÷ +100 (nm)
- Standard Compliance TIA/EIA 604-3(SC)
- Lid lock tail by folding operations
- Bright funnel-shaped cable guide hole for easy installation
- The product has a V-groove design with the tail to easily place the optical fiber into the optical connector
- Goods are fully certified with CO/CQ
- Product information is available on the manufacturer's website

## Specifications:

Type fast connector	SC/APC or SC/UPC
Insertion Loss	IL≤0,3dB
Return Loss	UPC≥45dB , APC≥50dB
Insertion loss change after 500 times fast connector plug into coupler	≤0.2dB
Size	52x6mm
Coating Diameter	250μm
Type cable	2.0x3.0mm±0.2
Insert time	≥500 times
The ability to reuse	≥10 times
On-line Tensile Strength Test	≥20N
Humidity	<95RH
Operating temperature	-10°C ÷ +65°C
Warranty	≥12 month

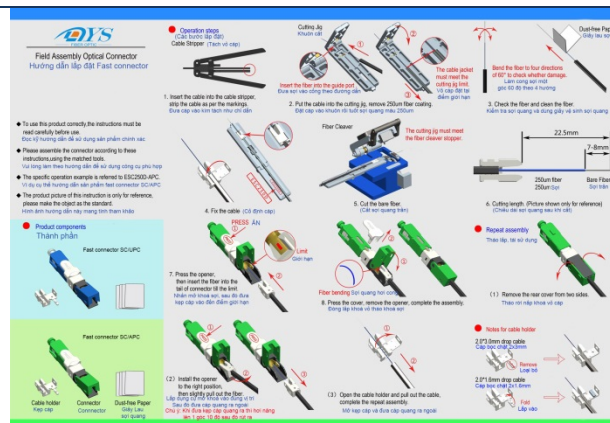
## Structure:

<p>Product structure</p>	 <p>Labels in diagram:</p> <ul style="list-style-type: none"> <li>Dust cap</li> <li>Shell</li> <li>Inner shell</li> <li>Key cover</li> <li>V-slot body</li> <li>Tail cover</li> <li>Fixed line grooves</li> <li>Spring</li> <li>Spring seat</li> </ul>
<p>3-point locking structure</p>	 <p>Labels in diagram:</p> <ul style="list-style-type: none"> <li>0,125mm</li> <li>0,250mm</li> <li>Cable 2x3mm</li> </ul>
<p>Fiber directional hole</p>	 <p>Labels in diagram:</p> <ul style="list-style-type: none"> <li>Tail cover</li> <li>Funnel-shaped directional hole</li> </ul>

## Accessories:

### User manual:

- In Vietnamese
- 01pc/10 fast connector



### Adapter:

- Measuring tape and yarn stripper
- 01 adapter/30 fast connector



## Information order:

P/N: F-DYS-SCA-GAP  
F-DYS-SCU-GAP