



**ONE** -Stop Solution Service;  
Products made by DYS own factory with competitive price,  
good quality and fast delivery time.



## Data Center Series

### SHENZHEN DYS FIBER OPTIC TECHNOLOGY CO.,LTD

Tel: 86-0755-29650336 Fax: 86-0755-29510505 Mail: [dys@dysfiber.com](mailto:dys@dysfiber.com)

Headquarters: 2/F,7Building,TangTou Industrial Zone 3rd,shiyang Town,BaoAn District,Shenzhen,P.R.China

ShenZhen Factory: 2/F,7Building,TangTou Industrial Zone 3rd,shiyang Town,BaoAn District,Shenzhen,P.R.China

MianYang Factory: 3rd,Wu Tong Villages,WuDuo Town,JiangYou City,SiChuan Province,P.R.China



## PROFILE COMPANY

Shenzhen DYS Fiber Optic Technology is a leading company in developing and manufacturing advanced fiber optic products, mainly make fiber optic indoor and outdoor cable, CPRI waterproof jumper, MPO/MTP jumper , standard fiber optic jumper and PLC Splitter. DYS win the honorary title of National High-tech enterprise by Shenzhen government in 2014.

With years of experiences in the fiber optic industry, our factory is fully equipped over 3500 square meters and more than 18 non dust production lines .About 200 well-trained staff and engineers are contributing to our proud products. We have 5 production lines for fiber optic cable, 2 high standard MPO/MTP jumper assembly lines, 8 production lines for standard jumper and 8 PLC Splitter production lines.

The most advanced imported polishing equipment and testing instruments enable our products have super quality, such as Senko polishing machine, interferometer, automatic cleaning machine and OTDR ,JGR and so on.

All of our optical products are RoHS compliant and DYS also obtained ISO9001, ISO14001 certification. Our high quality products and outstanding service win the customer from all the world, DYS fiber optic is looking forward to cooperate with you.

## OUR ADVANTAGE

- 01
- ONE-Stop Solution Service;
- 02
- Products made by DYS own factory with competitive price, good quality and fast delivery time.

# contents

## contents

MPO/MTP® Trunk Cables	1
MPO/MTP® Harnesses Cables	2
MPO/MTP® Fan out 0.9mm Patch Cords	3
IP-Series MPO/MTP® Assemblies	4
High Density LC Patch Cords	5
MPO/MTP® Loopback	6
MT Patch Cords	7
Pre-Terminated Cables	8
MPO/MTP® Patch Panel	9
MPO/MTP® Cassettes	10
Why Choose DYS Fiber Optic	11
Major Equipment	12

## MPO/MTP® Trunk Cables

### Applications

- Data center network
- Optical system access network
- Storage area networking fiber channel
- High density architectures

### Features

- 100% pre-terminated and tested in factory to ensure transfer performance
- Rapid configuration and networking, reduce installation time
- Supports 40G and 100G network applications
- Jacket material: LSZH, OFNR, OFNP available
- Supports up to 12F, 24F, 48F, 72F, 96F, 144F, customized products are available



### Optical Performance

Performance Level			Standard		Elite	
Connector	Mode	Endface	IL(max) (dB)	RL(min) (dB)	IL(max) (dB)	RL(min) (dB)
MPO/MTP	SM	12F/APC	≤0.70	≥60	≤0.35	≥60
		24F/APC	≤0.75	≥60	≤0.35	≥60
		48F/APC	≤0.75	≥60		
	MM	12F/PC	≤0.50	≥20	≤0.35	≥20
		24F/PC	≤0.50	≥20	≤0.35	≥20
		48F/PC	≤0.50	≥20		

Note:  
1.Test wavelength:SM@1310/1550nm,MM@850/1300nm;  
2.Standard conformance: GR-326,GR-1435.

### Mechanical Properties

Item		Criteria	Conformance
ΔIL After 50 Matings	MPO/MTP	≤0.3dB	GR-1435
ΔIL After 500 Matings	LC/SC/FC/ST	≤0.2dB	IEC 61300-2-2
Min Bend Radius (Dynamic)		20*OD (Cable Diameter)	
Min Bend Radius (Static )		15*OD (Cable Diameter)	

### Environment Conditions

Item	Criteria	Conformance
Operation Temperature	-40~60℃	IEC 61753-1
Storage Temperature	-45~85℃	

## MPO/MTP® Harnesses Cables

### Applications

- Data Center network
- Optical system access network
- Storage area networking fiber channel
- High density architectures

### Features

- 100% pre-terminated and tested in factory to ensure transfer performance
- Rapid configuration and networking, reduce installation time
- Supports 40G and 100G network applications
- Jacket material: LSZH, OFNR, OFNP available
- Supports up to 12F, 24F, 48F, 72F, 96F, 144F, customized products are available



### Optical Performance

Performance Level			Standard		Elite	
Connector	Mode	Endface	IL(max) (dB)	RL(min) (dB)	IL(max) (dB)	RL(min) (dB)
MPO/MTP	SM	12F/APC	≤0.70	≥60	≤0.35	≥60
		24F/APC	≤0.75	≥60	≤0.35	≥60
		48F/APC	≤0.75	≥60		
	MM	12F/PC	≤0.50	≥20	≤0.35	≥20
		24F/PC	≤0.50	≥20	≤0.35	≥20
		48F/PC	≤0.50	≥20		
LC/SC/FC/ST	SM	APC	≤0.30	≥60	≤0.10	≥60
		UPC	≤0.20	≥50	≤0.10	≥50
	MM	PC	≤0.20	≥30	≤0.10	≥30

Note:  
1.Test wavelength:SM@1310/1550nm,MM@850/1300nm;  
2.Standard conformance: GR-326,GR-1435.

### Mechanical Properties

Item		Criteria	Conformance
ΔIL After 50 Matings	MPO/MTP	≤0.3dB	GR-1435
ΔIL After 500 Matings	LC/SC/FC/ST	≤0.2dB	IEC 61300-2-2
Min Bend Radius (Dynamic)		20*OD (Cable Diameter)	
Min Bend Radius (Static )		15*OD (Cable Diameter)	

### Environment Conditions

Item	Criteria	Conformance
Operation Temperature	-40~60℃	IEC 61753-1
Storage Temperature	-45~85℃	



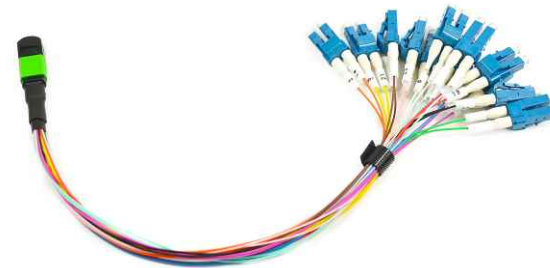
## MPO/MTP® Fan out 0.9mm Patch Cords

### Applications

- Data center network
- Optical system access network
- Storage area networking fiber channel
- High density architectures

### Features

- Economical solution for mass-termination of fiber
- Designed for low loss and standard loss SM and MM applications
- Ruggedized round cable, oval cable and bare ribbon options available
- Color coded housings available to differentiate fiber type, polish type and/or connector grade
- Good in repeatability and exchangeability



### Optical Performance

Performance Level			Standard		Elite	
Connector	Mode	Endface	IL(max) (dB)	RL(min) (dB)	IL(max) (dB)	RL(min) (dB)
MPO/MTP	SM	12F/APC	≤0.70	≥60	≤0.35	≥60
		24F/APC	≤0.75	≥60	≤0.35	≥60
		48F/APC	≤0.75	≥60		
	MM	12F/PC	≤0.50	≥20	≤0.35	≥20
		24F/PC	≤0.50	≥20	≤0.35	≥20
		48F/PC	≤0.50	≥20		
LC/SC/FC/ST	SM	APC	≤0.30	≥60	≤0.10	≥60
		UPC	≤0.20	≥50	≤0.10	≥50
	MM	PC	≤0.20	≥30	≤0.10	≥30

Note:  
1.Test wavelength:SM@1310/1550nm,MM@850/1300nm;  
2.Standard conformance: GR-326,GR-1435.

### Mechanical Properties

Item		Criteria	Conformance
ΔIL After 50 Matings	MPO/MTP	≤0.3dB	GR-1435
ΔIL After 500 Matings	LC/SC/FC/ST	≤0.2dB	IEC 61300-2-2
Min Bend Radius (Dynamic)		20*OD (Cable Diameter)	
Min Bend Radius (Static )		15*OD (Cable Diameter)	

### Environment Conditions

Item	Criteria	Conformance
Operation Temperature	-40~60°C	IEC 61753-1
Storage Temperature	-45~85°C	

## IP-Series MPO/MTP® Assemblies

### Applications

- Data Center network
- Optical system access network
- Storage area networking fiber channel
- High density architectures

### Features

- Available for standard or low loss MPO/MTP® interface
- Bayonet locking design with IP68 sealing
- Highly customizable configurations
- Designed with protective housing, which fulfills IP67 environmental sealing



### Optical Performance

Performance Level			Standard		Elite	
Connector	Mode	Endface	IL(max) (dB)	RL(min) (dB)	IL(max) (dB)	RL(min) (dB)
MPO/MTP	SM	12F/APC	≤0.70	≥60	≤0.35	≥60
		24F/APC	≤0.75	≥60	≤0.35	≥60
		48F/APC	≤0.75	≥60		
	MM	12F/PC	≤0.50	≥20	≤0.35	≥20
		24F/PC	≤0.50	≥20	≤0.35	≥20
		48F/PC	≤0.50	≥20		
LC/SC	SM	APC	≤0.30	≥60	≤0.10	≥60
		UPC	≤0.20	≥50	≤0.10	≥50
	MM	PC	≤0.20	≥30	≤0.10	≥30

Note:  
1.Test wavelength:SM@1310/1550nm,MM@850/1300nm;  
2.Standard conformance: GR-326,GR-1435.

### Mechanical Properties

Item		Criteria	Conformance
ΔIL After 50 Matings	MPO/MTP	≤0.3dB	GR-1435
ΔIL After 500 Matings	LC/SC/FC/ST	≤0.2dB	IEC 61300-2-2
Min Bend Radius (Dynamic)		20*OD (Cable Diameter)	
Min Bend Radius (Static )		15*OD (Cable Diameter)	

### Environment Conditions

Item	Criteria	Conformance
Operation Temperature	-40~60°C	IEC 61753-1
Storage Temperature	-45~85°C	

# High Density Patch Cords

## Applications

- Connection between optical distribution panels and equipment

## Features

- 100% pre-terminated and tested in factory to ensure transfer performance
- Reduction of installation time
- Fire retardant in conformity with IEC 60332-3C standard
- No corrosive gas emissions IEC 60754-2 standard
- Low smoke zero halogen emissions with IEC 61034-2 standard
- Using standard LC, SC, ST, FC connectors, supporting simplex or duplex
- Customized products available



## Optical Performance

Performance Level			Standard		Elite	
Connector	Mode	Endface	IL(max) (dB)	RL(min) (dB)	IL(max) (dB)	RL(min) (dB)
MPO/MTP	SM	12F/APC	≤0.70	≥60	≤0.35	≥60
		24F/APC	≤0.75	≥60	≤0.35	≥60
	MM	12F/PC	≤0.50	≥20	≤0.35	≥20
		24F/PC	≤0.50	≥20	≤0.35	≥20
LC/SC/FC/ST	SM	APC	≤0.30	≥60	≤0.10	≥60
		UPC	≤0.20	≥50	≤0.10	≥50
	MM	PC	≤0.20	≥30	≤0.10	≥30

Note:  
1.Test wavelength:SM@1310/1550nm,MM@850/1300nm;  
2.Standard conformance: GR-326,GR-1435.

## Mechanical Properties

Item		Criteria	Conformance
ΔIL After 50 Matings	MPO/MTP	≤0.3dB	GR-1435
ΔIL After 500 Matings	LC/SC/FC/ST	≤0.2dB	IEC 61300-2-2
Min Bend Radius (Dynamic)		20*OD (Cable Diameter)	
Min Bend Radius (Static )		15*OD (Cable Diameter)	

## Environment Conditions

Item	Criteria	Conformance
Operation Temperature	-40~60℃	IEC 61753-1
Storage Temperature	-45~85℃	

# MPO/MTP® Loopback

## Applications

- 40GbE QSFP+ Optical Testing
- Research and Development
- Manufacturing Test
- Troubleshooting
- Quality Control
- Training



## Features

- Available in a wide variety of wiring configurations and fiber types
- All loopbacks meet TIA/EIA and IEC intermateability standards
- 8 , 12, and 24 Fiber available
- Easy Installation/Removal,available with or without Pull tabs
- Compact and portable with lanyard feature

## Optical Performance

Performance Level			Standard		Elite	
Connector	Mode	Endface	IL(max) (dB)	RL(min) (dB)	IL(max) (dB)	RL(min) (dB)
MPO/MTP	SM	12F/APC	≤0.70	≥60	≤0.35	≥60
		24F/APC	≤0.75	≥60	≤0.35	≥60
	MM	12F/PC	≤0.50	≥20	≤0.35	≥20
		24F/PC	≤0.50	≥20	≤0.35	≥20

Note:  
1.Test wavelength:SM@1310/1550nm,MM@850/1300nm;  
2.Standard conformance: GR-326,GR-1435.

## Mechanical Properties

Item		Criteria	Conformance
ΔIL After 50 Matings	MPO/MTP	≤0.3dB	GR-1435
ΔIL After 500 Matings	LC/SC/FC/ST	≤0.2dB	IEC 61300-2-2
Min Bend Radius (Dynamic)		20*OD (Cable Diameter)	
Min Bend Radius (Static )		15*OD (Cable Diameter)	

## Environment Conditions

Item	Criteria	Conformance
Operation Temperature	-40~60℃	IEC 61753-1
Storage Temperature	-45~85℃	

## MT Patch Cords

### Applications

- QSFP ( quad small form-factor pluggable)
- SFP+active optical cables
- Parallel light optical transceiver module
- Super computers
- Communication
- Military applications
- Data centers



### Features

- Transmission rate: 40Gbps/100Gbps/168Gbps
- GR-1435 compliant
- Simple structure easy to locate
- Low cost
- Customized products available

Performance Level			Standard		Elite	
Connector	Mode	Endface	IL(max) (dB)	RL(min) (dB)	IL(max) (dB)	RL(min) (dB)
MT	SM	12F/APC	≤0.50	≥60	≤0.35	≥60
	MM	12F/PC	≤0.50	≥20	≤0.35	≥20

### Environment Conditions

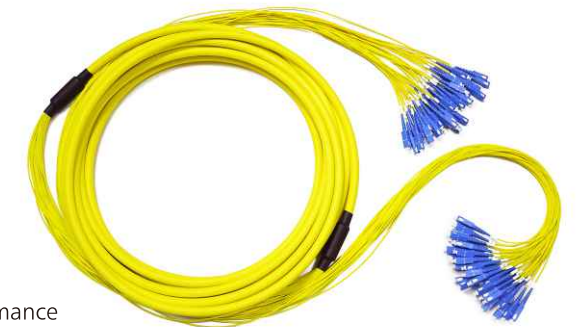
Item	Criteria	Conformance
Operation Temperature	-40~60°C	IEC 61753-1
Storage Temperature	-45~85°C	

Note: Customization available

## Pre-Terminated Cables

### Applications

- Connected with trunk cables on one end, equipment port on the other end
- Connected with transfer modules on one end, equipment port on the other end



### Features

- 100% pre-terminated and tested in factory to ensure transfer performance
- Rapid configuration and networking, reduce installation time
- Supports 40G and 100G network applications
- Jacket material: LSZH, OFNR, OFNP available
- Supports up to 12F, 24F, 48F, 72F, 96F, 144F, customized products are available

### Optical Performance

Performance Level			Standard		Elite	
Connector	Mode	Endface	IL(max) (dB)	RL(min) (dB)	IL(max) (dB)	RL(min) (dB)
LC/SC/FC/ST	SM	APC	≤0.30	≥60	≤0.20	≥65
		UPC	≤0.20	≥50	≤0.10	≥50
	MM	PC	≤0.20	≥30	≤0.10	≥30

Note:

- 1.Test wavelength:SM@1310/1550nm,MM@850/1300nm;
- 2.Standard conformance: GR-326,GR-1435.

### Mechanical Properties

Item		Criteria	Conformance
ΔIL After 50 Matings	MPO/MTP	≤0.3dB	GR-1435
ΔIL After 500 Matings	LC/SC/FC/ST	≤0.2dB	IEC 61300-2-2
Min Bend Radius (Dynamic)		20*OD (Cable Diameter)	
Min Bend Radius (Static )		10*OD (Cable Diameter)	

### Environment Conditions

Item	Criteria	Conformance
Operation Temperature	-40~60°C	IEC 61753-1
Storage Temperature	-45~85°C	


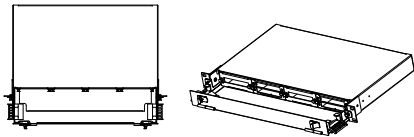
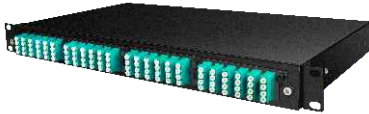
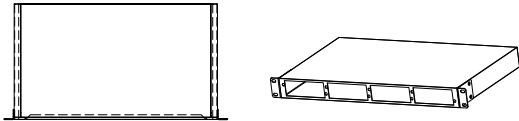

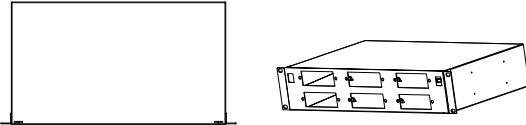

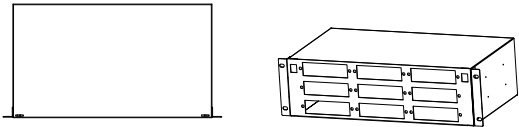
MPO/MTP® Patch Panel

Applications

- Data centers,pre-terminated installations
- Telecommunication networks
- Storage area networking fiber channel
- High denisty architectures

Features

- Finishing: powder coated
- Fits into 19 inch installations
- Max capacity up to 144 fiber for 1U
- Sliding tray design
- Easy to operate and maintain

	
Dimension (H*W*D)	1U*482*352 (mm)
Capacity	4 Cassette or Faceplate
Mounting Hole Distance	470 mm
	
Dimension (H*W*D)	1U*482*250 (mm)
Capacity	4 Cassette or Faceplate
Mounting Hole Distance	470 mm
	
Dimension (H*W*D)	2U*482*250 (mm)
Capacity	6 Cassette or Faceplate
Mounting Hole Distance	470 mm
	
Dimension (H*W*D)	3U*484*250 (mm)
Capacity	9 Cassette or Faceplate
Mounting Hole Distance	466 mm
Material	Cold-rolled steel


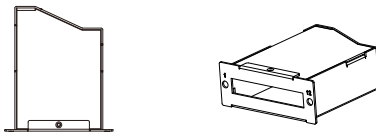

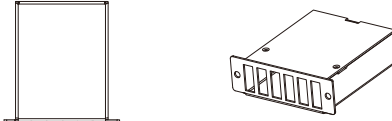

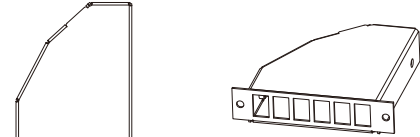

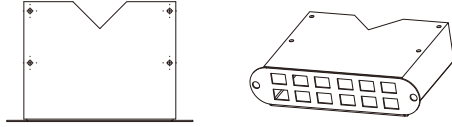
MPO/MTP® Cassettes

Applications

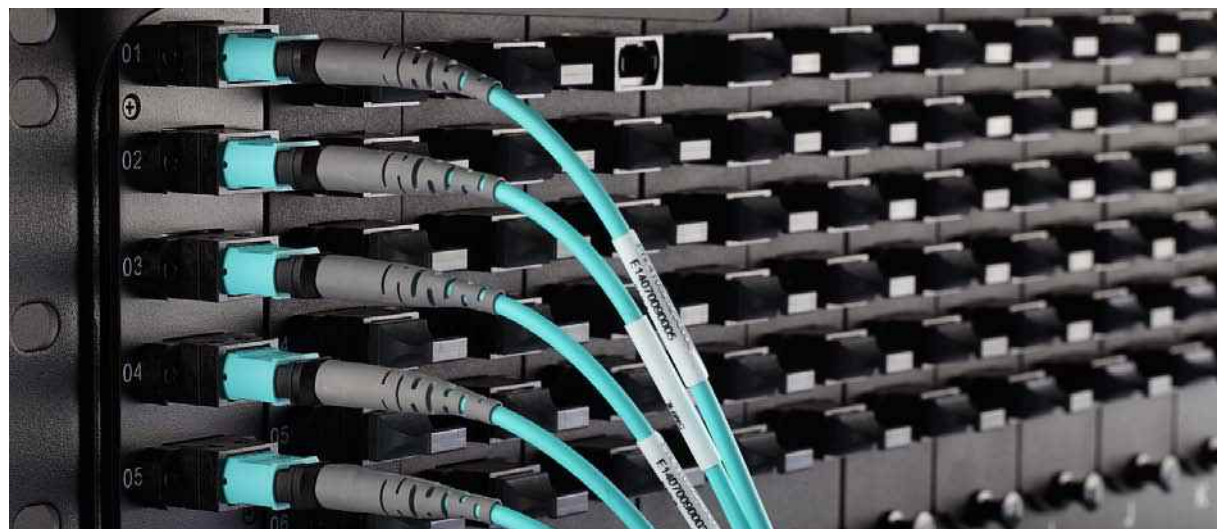
- Implementation of the structured cabling in Data Centers

Features

- 100% pre-terminated and tested in factory to ensure transfer performance
- Rapid configuration and networking, reduce installation time
- Supports 40G and 100G network applications

	
Dimension (H*W*D)	36.5 x 102 x 116 (mm)
Capacity	1MPO/MTP®-12F LC1MPO/MTP®-24F LC2MPO/MTP®-24F LC
Mounting Hole Distance	91 mm
	
Dimension (H*W*D)	34.5 x 109 x 114 (mm)
Capacity	1MPO/MTP®-12F LC1MPO/MTP®-24F LC2MPO/MTP®-24F LC
Mounting Hole Distance	99 mm
	
Dimension (H*W*D)	27 x 130 x 126(mm)
Capacity	1MPO/MTP®-12F LC1MPO/MTP®-24F LC2MPO/MTP®-24F LC
Mounting Hole Distance	118 mm
	
Dimension (H*W*D)	35 x 155 x 95 (mm)
Capacity	1MPO/MTP®-12F LC1MPO/MTP®-24F LC2MPO/MTP®-24F LC
Mounting Hole Distance	145 mm
Material	Cold-rolled steelAluminum





## WHY CHOOSE DYS FIBER OPTIC

### GOOD QUALITY

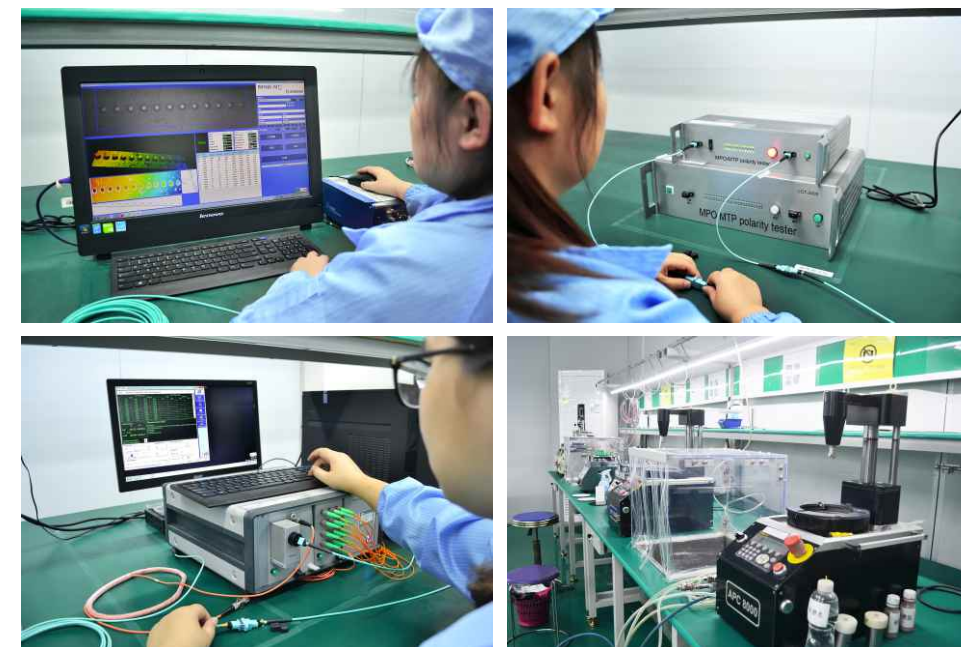
We strongly believe that product quality and performance are the key success factors of a company. This mindset has been rooted throughout the whole organization, everybody believes that only high standards are necessary to win the customer and market.

### INNOVATIVE TECHNOLOGY

We always learn new technology by investing in production facilities, engineering process control systems, and talent development to maintain our status as a leading fiber optic connection solutions.

### HIGH STANDARD

We believe a high standard of professionalism towards our product and service offerings combined with our superior engineering solutions serve to satisfy the unique needs of our customers.



Major Equipment

100% Factory Tested